

APP CRS 155°	Rwy Idg 5318
	TDZE 772
	Apt Elev 772

RNAV (GPS) RWY 16

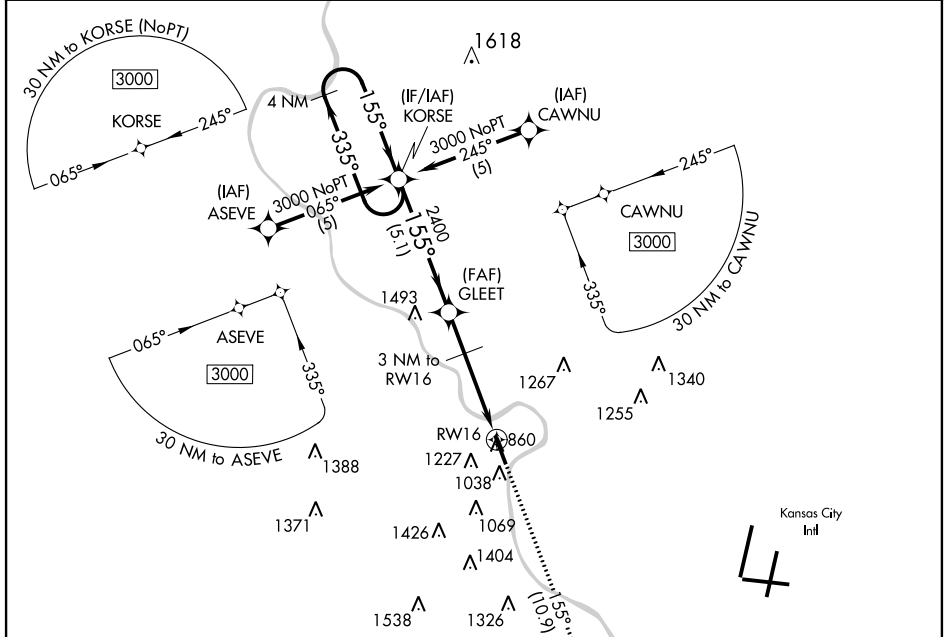
SHERMAN AAF (FLV)

NA DME/DME RNP-0.3 NA. Use Kansas City Intl altimeter setting. Circling not authorized west of Rwy 16-34.

MISSED APPROACH: Climb to 3100 via 155° course to PAKLY WP and hold.

KANSAS CITY APP CON
124.7 318.1

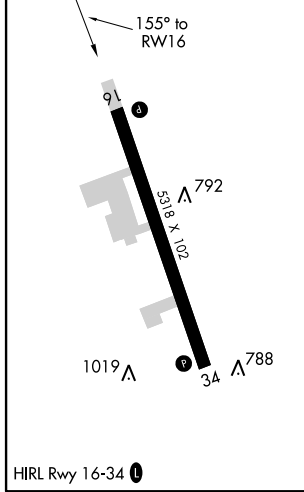
CTAF
126.20*



NC-2, 07 JAN 2016 to 04 FEB 2016

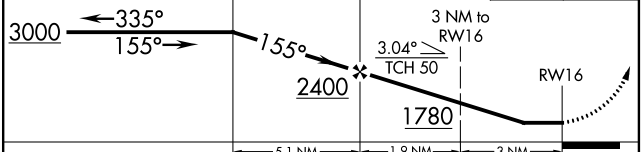
NC-2, 07 JAN 2016 to 04 FEB 2016

ELEV 772	TDZE 772
----------	----------



HIRL Rwy 16-34

VGSI and descent angles not coincident (VGSI Angle 3.00/TCH 40).
4 NM Holding Pattern



CATEGORY	A	B	C	D
LNAV MDA	1520-1 748 (800-1)	1520-1¼ 748 (800-1¼)	1520-2¼ 748 (800-2¼)	NA
CIRCLING	1520-1 748 (800-1)	1520-1¼ 748 (800-1¼)	1520-2¼ 748 (800-2¼)	NA