

APP CRS 335°	Rwy Idg 5318
	TDZE 769
	Apt Elev 772

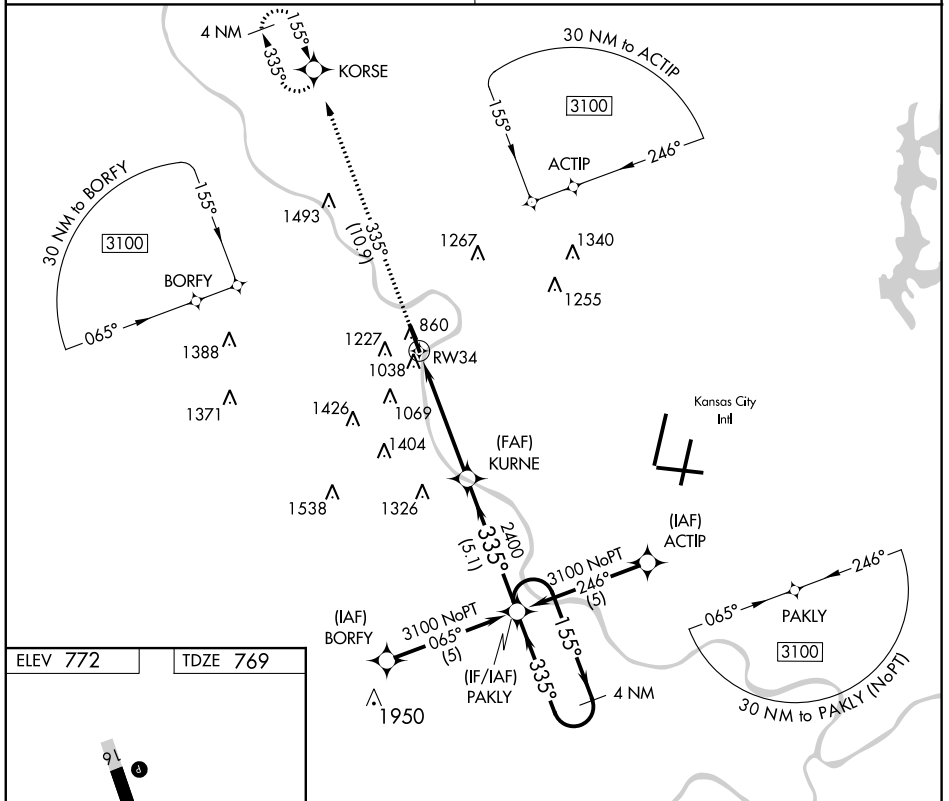
RNAV (GPS) RWY 34

SHERMAN AAF (FLV)

NA DME/DME RNP-0.3 NA. Use Kansas City Intl altimeter setting. Circling not authorized west of Rwy 16-34.

MISSED APPROACH: Climb to 3000 via 335° course to KORSE WP and hold.

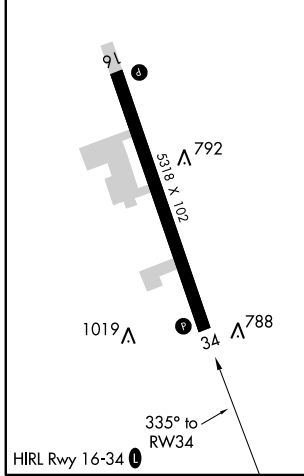
KANSAS CITY APP CON **124.7 318.1** CTAF **126.20***



NC-2, 07 JAN 2016 to 04 FEB 2016

NC-2, 07 JAN 2016 to 04 FEB 2016

ELEV 772	TDZE 769
----------	----------



3000 KORSE VGSI and descent angles not coincident (VGSI Angle 3.00/TCH 41). 4 NM Holding Pattern

335° crs

KURNE PAKLY

RW34 2400 3100

335° 155°

3.04° TCH 50

4.9 NM 5.1 NM

CATEGORY	A	B	C	D
LNAV MDA	1560-1 791 (800-1)	1560-1¼ 791 (800-1¼)	1560-2¼ 791 (800-2¼)	NA
CIRCLING	1560-1 788 (800-1)	1560-1¼ 788 (800-1¼)	1560-2¼ 788 (800-2¼)	NA