

| | | |
|----------------------|------------------------|-----------------|
| LOM RN 416 | APP CRS 316° | Rwy Idg 5318 |
| | | TDZE 769 |
| | | Apt Elev 772 |

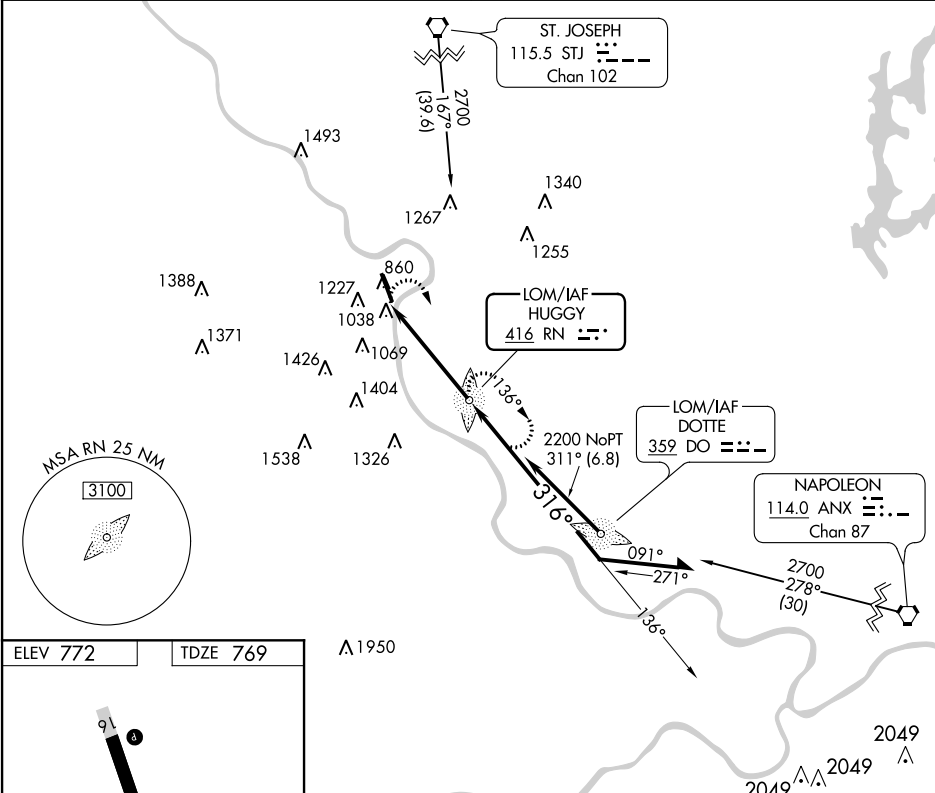
NDB RWY 34
SHERMAN AAF (FLV)

NA Use Kansas City Intl altimeter setting. Circling not authorized west of Rwy 16-34.

MISSED APPROACH: Climbing right turn to 2600 direct to RN LOM and hold.

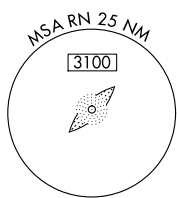
KANSAS CITY APP CON **124.7 318.1**

CTAF **126.20***

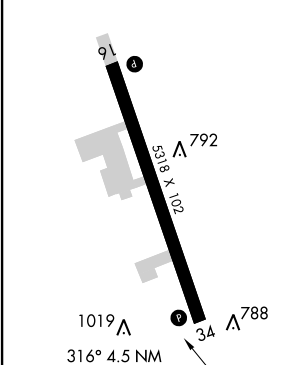


NC-2, 07 JAN 2016 to 04 FEB 2016

NC-2, 07 JAN 2016 to 04 FEB 2016



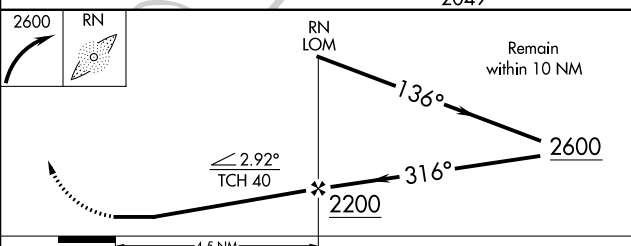
| | |
|----------|----------|
| ELEV 772 | TDZE 769 |
|----------|----------|



HIRL Rwy 16-34

FAF to MAP 4.5 NM

| | | | | | |
|---------|------|------|------|------|------|
| Knots | 60 | 90 | 120 | 150 | 180 |
| Min:Sec | 4:30 | 3:00 | 2:15 | 1:48 | 1:30 |



| CATEGORY | A | B | C | D |
|----------|-----------------------|-------------------------|-------------------------|----|
| S-34 | 1520-1 751 (800-1) | 1520-1¼ 751 (800-1¼) | 1520-2¼ 751 (800-2¼) | NA |
| CIRCLING | 1520-1 748 (800-1) | 1520-1¼ 748 (800-1¼) | 1520-2¼ 748 (800-2¼) | NA |