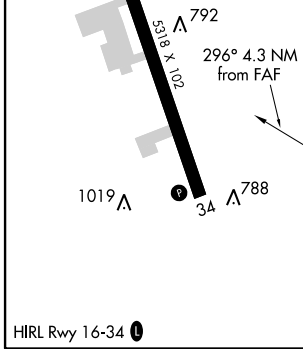
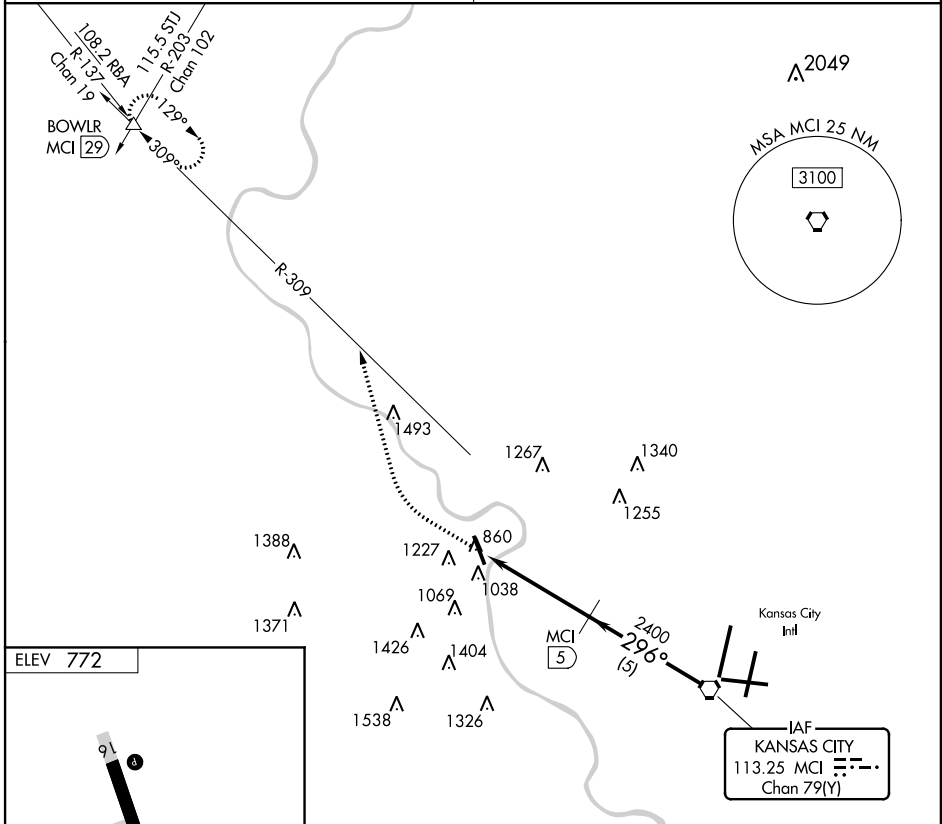


VORTAC MCI 113.25 Chan 79 (Y)	APP CRS 296°	Rwy Idg TDZE Apt Elev 772	N/A N/A 772
---	------------------------	---	--

VOR/DME-A
SHERMAN AAF (F'L V)

<p>NA Use Kansas City Intl altimeter setting. Circling NA west of Rwy 16-34</p>	<p>MISSED APPROACH: Climbing right turn to 3000 via heading 340° and MCI R-309 to BOWLR INT and hold.</p>
<p>KANSAS CITY APP CON 124.7 318.1</p>	<p>CTAF 126.20*</p>



<p>3000 hdg 340°</p>	MCI R-309	BOWLR	MCI VORTAC	
<p>MCI 9.3</p>	<p>MCI 5</p>	<p>296°</p>	<p>4000</p>	
<p>4.3 NM</p>	<p>5 NM</p>	<p>Procedure Turn NA</p>		
KANSAS CITY INTL ALTIMETER SETTING MINIMUMS				
CATEGORY	A	B	C	D
CIRCLING	1440-1	668 (700-1)	1440-1¾ 668 (700-1¾)	1500-2¼ 728 (800-2¼)

NC-2, 07 JAN 2016 to 04 FEB 2016

NC-2, 07 JAN 2016 to 04 FEB 2016